



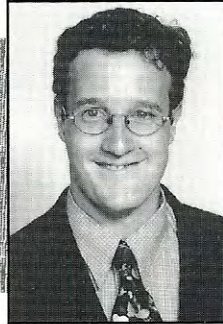
Central Washington Family Medicine

Resident Roster 1997-98

FIRST YEAR RESIDENTS



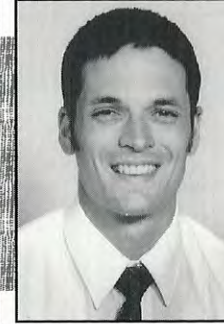
Lynda
Bascelli, MD



Ross
Bethel, MD



Mary Beth
Curtis, MD



Damon
McBrinn, MD

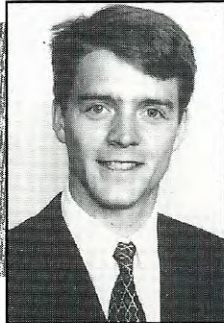


Anne
Nunes, DO

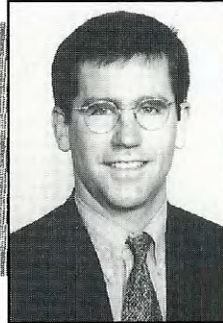


Scott
Reinmuth, MD

SECOND YEAR RESIDENTS



Mike
Abbott, MD



Jay
Jerome, MD



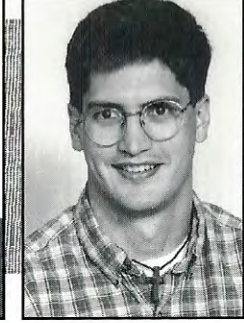
Konnie
Landis, MD



Neil
Olsen, MD



Steve
Penner, MD



Andrew
Toth, MD

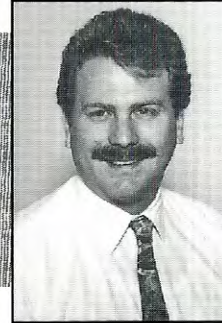
THIRD YEAR RESIDENTS



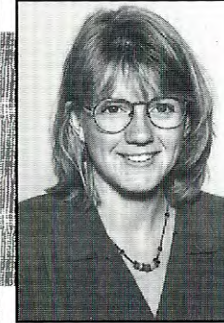
Steven
Crossman, MD



Eric
Daub, MD



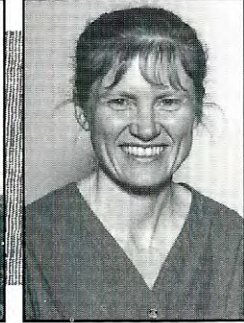
Jeff
Jamison, DO



Tori
Jones, MD



Lisa
Sessions, MD



Deborah
Sogge Kermani, MD